

COLOR FIELD PATINA



Color Field Patina



Milliken™

INSPIRED.

Patina is the culmination of changes in a material's surface resulting from age, use and exposure to the elements. These acquired attributes offer contrasting colors and textures in divergent planes where distinctive edges form and layers of wear create character. Patina is the expression of a material's heritage on display for all to interpret and appreciate.

Get more at millikenfloors.com

INSPIRING.

Oxidized metals, sun-bleached woods, worn concrete, and etched stone inspired the coloration and layered appearance of Patina. This natural extension of the original Color Field collection provides 32 new colors grouped into eight easy-to-coordinate color families. With its distinctive pattern, Patina celebrates the layers of age and wear as discovered in larger, more dynamic sections of color. Offered in high-performance, severe-rated modular carpet planks, Patina and the rest of the Color Field family stand up to the most extreme traffic conditions while providing an imaginative color palette.



Color Field Patina in Concrete Stone and Dim Stone (random mix in foreground), with Dim Stone in background, vertical ashlar plank installation



Color Field Patina in Dark Stucco and Stucco Verdigris, vertical ashlar plank installation with Polished Stone LVT in POL144



Get more at millikenfloors.com

Color Field Patina in Tansy (corridor), vertical ashlar plank installation, with True North in Heath (glass office), monolithic tile installation



PAT21 TINT STUCCO



PAT14-21 JUTE



PAT44-48 COPPER



PAT124 WOOD



PAT250 LIMESTONE



PAT152-144 NICKEL



PAT119-153 SLATE



PAT139-157 FROST STEEL



PAT4-21 STUCCO



PAT21-105 TANSY



PAT144-48 DARK COPPER



PAT145-124 BARK



PAT108-180 STONE



PAT152-13 ZINC



PAT119-13 ASH SLATE



PAT171-157 ARCTIC



PAT87 DARK STUCCO



PAT105-12 FLAXEN



PAT114-44 RUST



PAT145 EBONY WOOD



PAT108 DIM STONE



PAT13 DARK STEEL



PAT133-120 ELECTRUM



PAT245-249 SMALT



PAT141-14 STUCCO VERDIGRIS



PAT105-124 OCHRE



PAT114 COPPER RUST



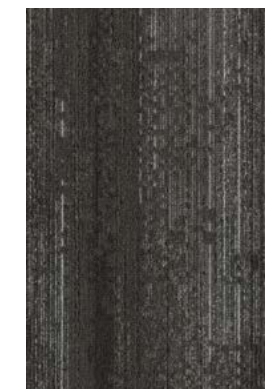
PAT59 WOOD BARK



PAT140-108 CONCRETE STONE



PAT79-13 STAINLESS STEEL



PAT133 GABBRO

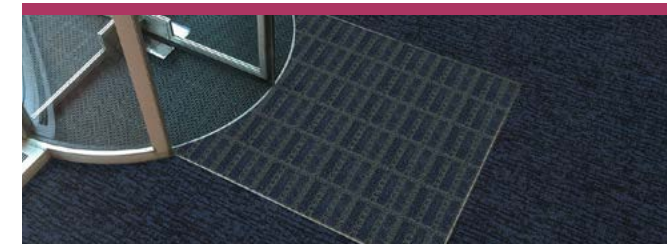


PAT249-52 BILLON

Complete Flooring Solutions



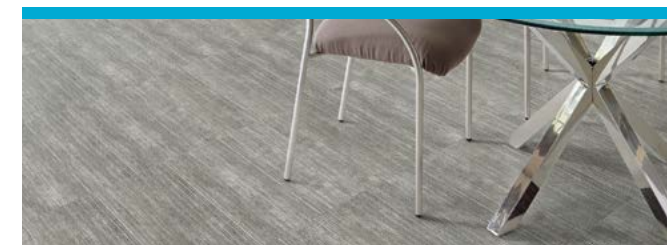
Milliken Floor Covering offers products and expertise in all areas of your commercial spaces, including high-performance entryway systems, broadloom & modular carpet, luxury vinyl tile, and milliCare®. Simplify your flooring needs with a trusted partner that will let you enjoy creating a great space without having to worry about everything else.



Entry Systems

The OBEX® brand of products offers highly effective, comprehensive modular entry solutions designed as a three-zone barrier system to prevent dirt and moisture from entering the building.

Available in coordinated colors and patterns, OBEX® entry products are engineered to increase the functionality of a building's entrance without forsaking elements of design or aesthetic. Simple and easy to work with, OBEX® offers entry systems that can be recessed or surface-mounted as well as exterior and interior applications.



Luxury Vinyl Tile

From natural looks of wood and stone to more modern textures and abstracts, Milliken's collection of Luxury Vinyl Tile flooring creates new options for a commercial or hospitality interior. Our simple-to-search Color Reference system provides easy coordination of the LVT options to modular and broadloom carpets. From carpet tile to broadloom to planks to LVT, Milliken provides durable and elegant options for your project.



Broadloom & Modular Carpet

Milliken's broadloom and carpet tile incorporate the latest innovations in tufting and dyeing technology, achieving unique looks and excellent performance. With our Color Reference system, coordinating multiple products across a single project is a snap; whether it's carpet, LVT, or entry systems. All carpet tile products have cushion backing for an extended lifespan, as well as ergonomic and environmental benefits. Broadloom carpet also has cushion-back options, and all are standard with StainSmart®, a proprietary treatment applied to Milliken carpets to repel and protect against stains and enhance soil release.



milliCare®

We care for the environment with products and a method that improve Indoor Air Quality and reduce water consumption and your carbon footprint. We care about you professionally by saving you time through customized service plans for your entire space provided for by our franchise network. You work healthier and live healthier, and the planet is a better place because of it. We can bring that same quality of care and service to you wherever you are. milliCare takes caring for your flooring and textiles off your to-do list, which means that you get to skip right to the part where you get to lean back, put your hands behind your head, and be a hero for keeping a beautifully cleaned space.

COLOR FIELD PATINA

Images in this brochure are approximate for color and pattern scale. Please use actual carpet samples to make your final selections.

Have you seen our other collections? Visit us online today.



Archipelago



Freelay LVT



Lineation



Whale Song



Construction

Tufted, Textured Loop

Tile Size

25 cm x 1 m (9.8" x 39.4")

Yarn Type

Milliken-Certified WearOn® Nylon Type 6,6

Stain Repel & Resist / Soil Release

StainSmart®

Tufted Face Weight

15 oz/yd² (509 g/m²)

Finished Pile Height

0.13" (3.30 mm)

Finished Pile Thickness

0.08" (2.03 mm)

Average Density

6,541

Standard Backing

PVC-Free Underscore™ ES Cushion Underscore™ is available with TractionBack®

Texture Appearance Retention

Rating (TARR)

Severe

Recommended Installation Method



PLANKS

TractionBack®

Simplify your modular installation with Milliken's patented TractionBack®, an innovative backing system that is faster, more cost efficient, and environmentally superior to wet adhesives and peel-and-stick carpet tile.



This cushion-back carpet tile product is covered by one or more patents, published applications and/or patents pending. Specifications are subject to normal manufacturing tolerances and may be changed without prior notice.

Growing greener for over 100 years.

This product has a UL® Environment 3rd party verified Environmental Product Declaration (EPD). A copy of the EPD is available online at millikencarpet.com/epd and productguide.ulenvironment.com.

Customer Concierge 800.824.2246 | millikenfloors.com
© 2016 Milliken & Company | Design © Milliken & Company | Made in the USA

Cover image: *Crumbling Wall in Rome, Italy*,
by Gabriel Scott. © 2016 Adobe Stock

2710027086
CP 0816