

FORMWORK



Formwork



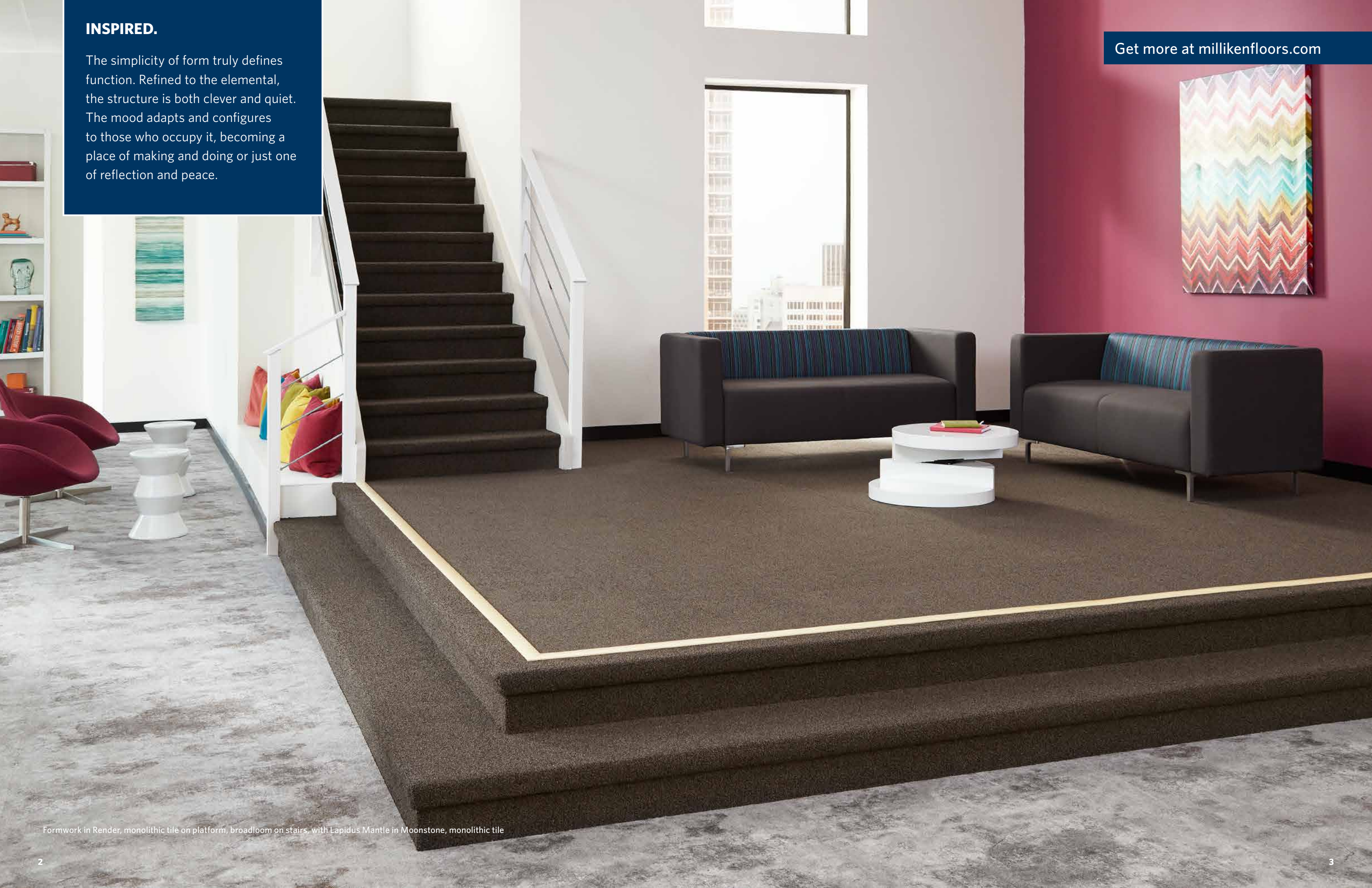
PRICE

Milliken™

INSPIRED.

The simplicity of form truly defines function. Refined to the elemental, the structure is both clever and quiet. The mood adapts and configures to those who occupy it, becoming a place of making and doing or just one of reflection and peace.

Get more at millikenfloors.com



Formwork in Render, monolithic tile on platform, broadloom on stairs, with Lapidus Mantle in Moonstone, monolithic tile



Formwork in Pillar, monolithic tile, with LVT Eero in EER25-144-208 (hallway)



Formwork in Abacus with Talus in Galena, 25cm x 1m ashlar planks



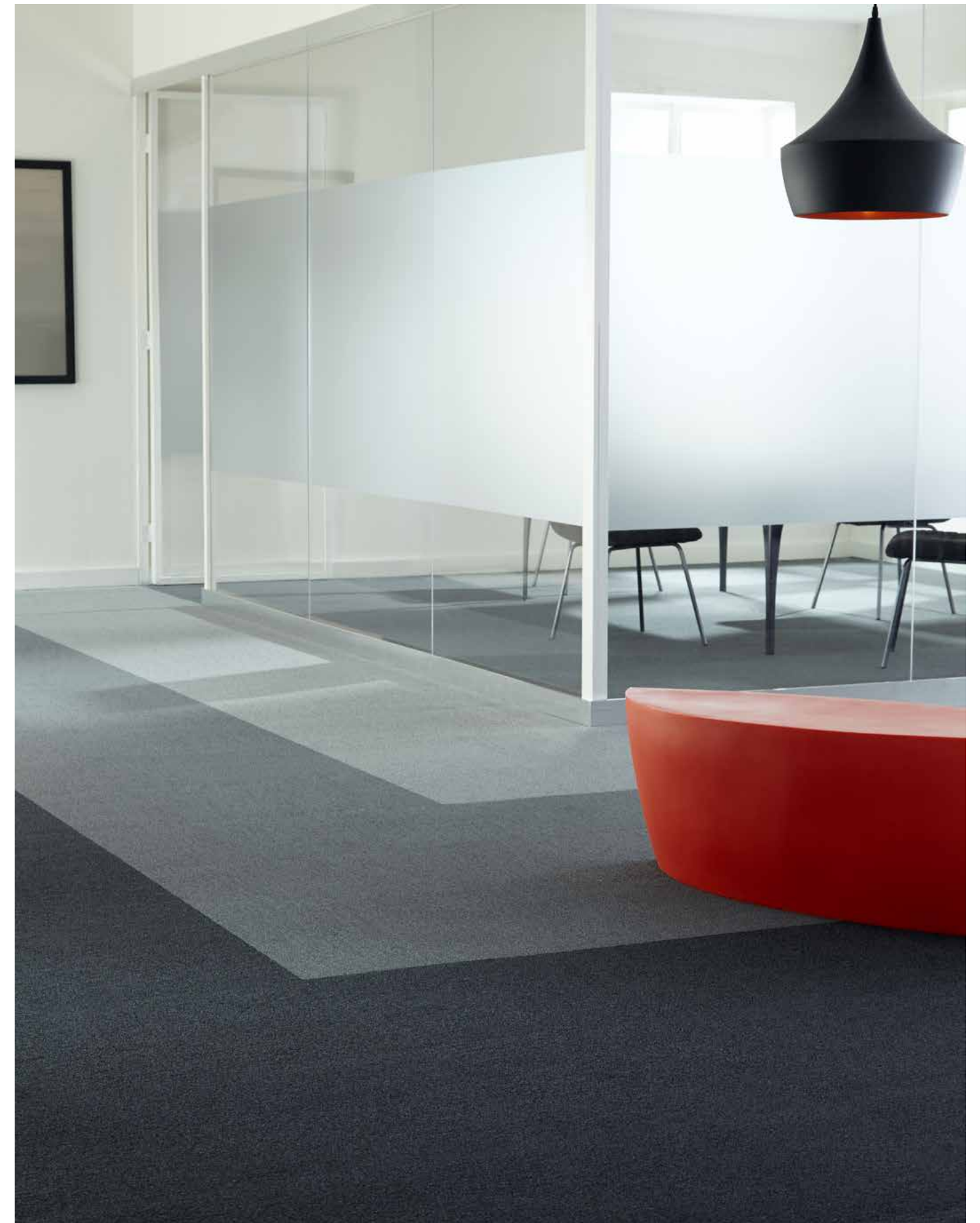
Formwork in Aquamarine with Talus in Galena, 25cm x 1m ashlar planks

INSPIRING.

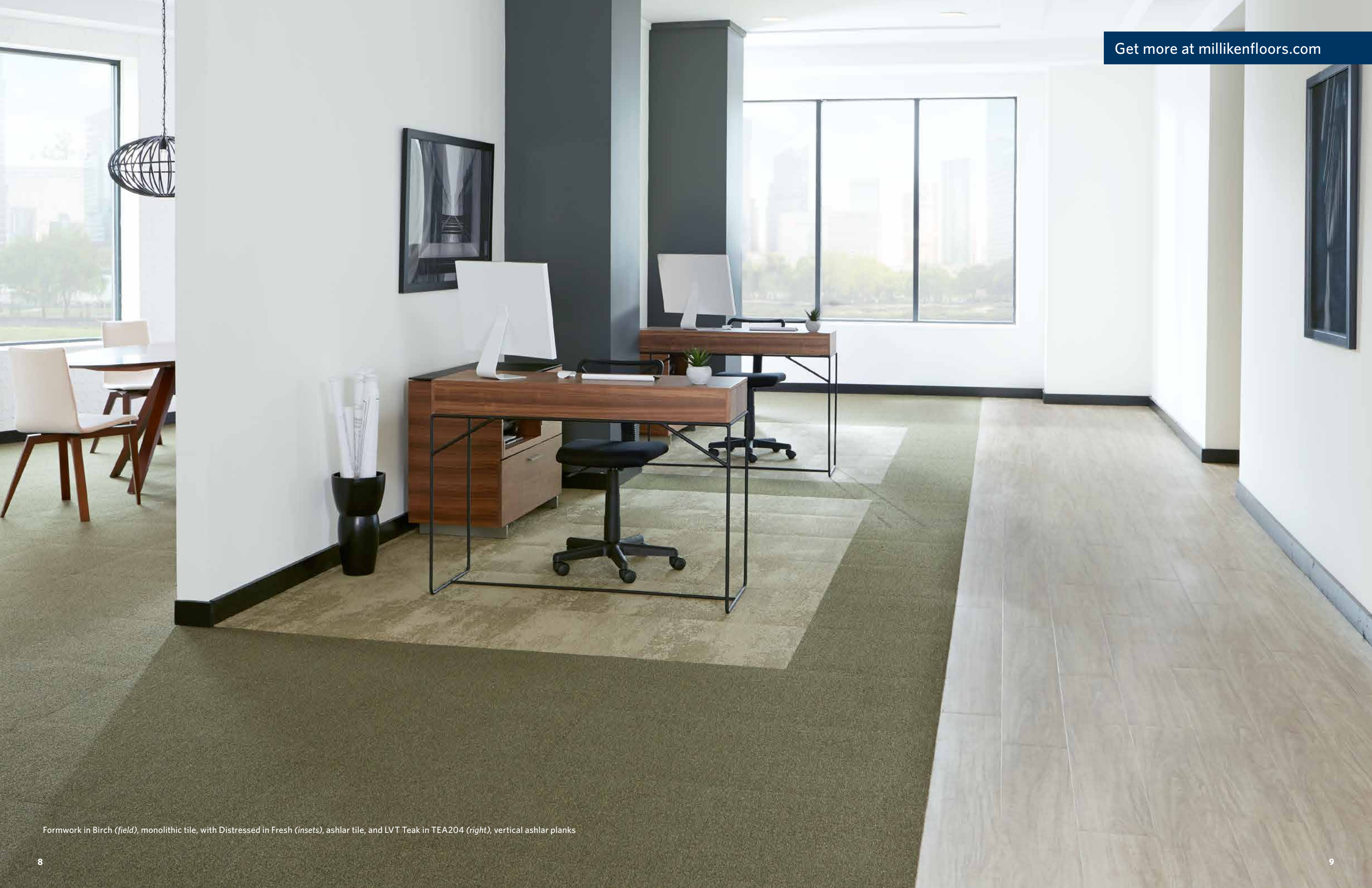
Offering understated simplicity and texture in a sophisticated palette, Formwork provides a practical and timeless coordinate to a wide selection of Milliken collections globally—made easier by coordinating colors using our Color Reference system.

The functional modular tile provides a full range of solutions. It can be used as a modern, full-field solid, define circulation or act as a transition between patterns.

Formwork in Gable, Abacus, and Atrium (bottom to top), monolithic tile



Formwork in Gable, Abacus, and Atrium (bottom to top), Abacus in conference room, monolithic tile



Formwork in Birch (*field*), monolithic tile, with Distressed in Fresh (*insets*), ashlar tile, and LVT Teak in TEA204 (*right*), vertical ashlar planks



Formwork in Midnight, monolithic tile installation, with Color Field in Felt Grey and Dry Dock, vertical ashlar planks



Get more at [millikenfloors.com](https://www.millikenfloors.com)

Formwork in Doric, monolithic tile, and Line By Line in Quick Draw with Quartz and Clementine accents, ashlar tile



FWK77 RUBBLE



FWK214 PEDIMENT



FWK251 MARBLE



FWK135 TANGERINE



FWK231 DORIC



FWK188 GOLDEN



FWK233 LINTEL



FWK114 POST



FWK121 TORUS



FWK169 SASH



FWK102 MEZZANINE



FWK252 PAPAYA



FWK59 RENDER



FWK94 WAINSCOT



FWK124 ARCHITRAVE



FWK179 PORT



FWK109 SCARLET



FWK168 RASPBERRY



FWK133 VAULT



FWK120 FOUNDATION



FWK122 PIER



FWK66 EAVES



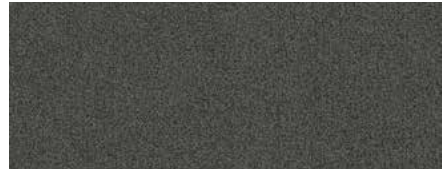
FWK232 MAUVE



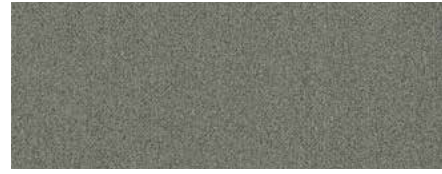
FWK227 FUCHSIA



FWK79 SPAR



FWK67 TRUSS



FWK171 CORNICE



FWK123 DENIM



FWK182 JOIST



FWK126 FRENCH BLUE



FWK118 PLINTH



FWK13 PILLAR



FWK108 PEDESTAL



FWK228 MIDNIGHT



FWK183 SAPPHIRE



FWK140 AZUL



FWK119 GABLE



FWK174 ABACUS



FWK153 ATRIUM



FWK229 OCEAN DEPTH



FWK201 AQUAMARINE



FWK101 SEA FOAM



FWK27 PITCH



FWK25 KEYSTONE



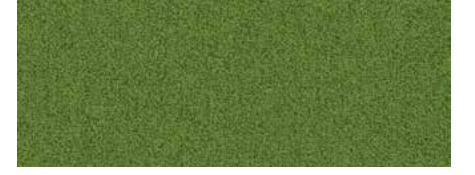
FWK152 CEMENT



FWK230 IVY



FWK203 JUNGLE



FWK141 APPLE



FWK107 CAPITOL



FWK52 BLUEPRINT



FWK154 BRACE



FWK88 OLIVE



FWK42 BIRCH



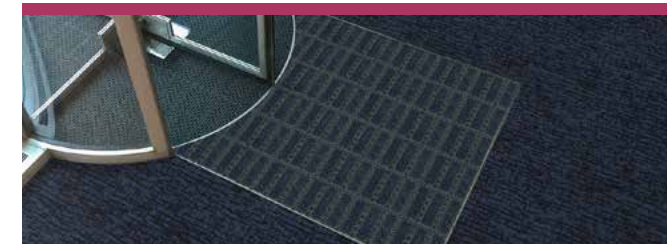
FWK45 CACTUS



Complete Flooring Solutions



Milliken Floor Covering offers products and expertise in all areas of your commercial spaces, including high-performance entryway systems, broadloom & modular carpet, luxury vinyl tile, and milliCare®. Simplify your flooring needs with a trusted partner that will let you enjoy creating a great space without having to worry about everything else.



Entry Systems

The OBEX® brand of products offers highly effective, comprehensive modular entry solutions designed as a three-zone barrier system to prevent dirt and moisture from entering the building.

Available in coordinated colors and patterns, OBEX® entry products are engineered to increase the functionality of a building's entrance without forsaking elements of design or aesthetic. Simple and easy to work with, OBEX® offers entry systems that can be recessed or surface-mounted as well as exterior and interior applications.



Broadloom & Modular Carpet

Milliken's broadloom and carpet tile incorporate the latest innovations in tufting and dyeing technology, achieving unique looks and excellent performance. With our Color Reference system, coordinating multiple products across a single project is a snap; whether it's carpet, LVT, or entry systems. All carpet tile products have cushion backing for an extended lifespan, as well as ergonomic and environmental benefits. Broadloom carpet also has cushion-back options, and all are standard with StainSmart®, a proprietary treatment applied to Milliken carpets to repel and protect against stains and enhance soil release.



Luxury Vinyl Tile

From natural looks of wood and stone to more modern textures and abstracts, Milliken's collection of Luxury Vinyl Tile flooring creates new options for a commercial or hospitality interior. Our simple-to-search Color Reference system provides easy coordination of the LVT options to modular and broadloom carpets. From carpet tile to broadloom to planks to LVT, Milliken provides durable and elegant options for your project.



milliCare®

We care for the environment with products and a method that improve Indoor Air Quality and reduce water consumption and your carbon footprint. We care about you professionally by saving you time through customized service plans for your entire space provided for by our franchise network. You work healthier and live healthier, and the planet is a better place because of it. We can bring that same quality of care and service to you wherever you are. milliCare takes caring for your flooring and textiles off your to-do list, which means that you get to skip right to the part where you get to lean back, put your hands behind your head, and be a hero for keeping a beautifully cleaned space.

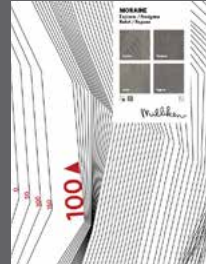
FORMWORK

Images in this brochure are approximate for color and pattern scale. Please use actual carpet samples to make your final selections.

Have you seen our other collections? Visit us online today.



Common Thread



Moraine



Construction

Tufted, Level Loop

Tile Sizes

50 cm x 50 cm (19.7" x 19.7")

25 cm x 1 m (9.85" x 39.4")

Broadloom Width

13'6" (4.11 m)

Yarn Type

Universal® Fibers Solution-Dyed

Nylon Type 6,6

Stain Repel & Resist / Soil Release

StainSmart®

Tufted Face Weight

18 oz/yd² (610.3 g/m²)

Finished Pile Height

0.15" (3.81 mm)

Finished Pile Thickness

0.10" (2.54 mm)

Average Density

6,300

Standard Backing

Tile: PVC-Free Underscore™ ES

Cushion

Underscore™ is available with TractionBack®

Broadloom: Endura-Loc™

Texture Appearance Retention Rating (TARR)

Tile: Severe

Broadloom: Heavy

Recommended Installation Methods



MONOLITHIC



PLANKS



BROADLOOM

As with all solid-color, low-pile carpet, some degree of seam visibility is to be expected.

TractionBack®

Simplify your modular installation with Milliken's patented TractionBack®, an innovative backing system that is faster, more cost efficient, and environmentally superior to wet adhesives and peel-and-stick carpet tile.



This cushion-back carpet tile product is covered by one or more patents, published applications and/or patents pending. Specifications are subject to normal manufacturing tolerances and may be changed without prior notice.

Growing greener for over 100 years.

This product has a UL® Environment 3rd party verified Environmental Product Declaration (EPD). A copy of the EPD is available online at millikencarpet.com/epd and productguide.ulenvironment.com.

Customer Concierge 800.824.2246 | millikenfloors.com
© 2017 Milliken & Company | Design © Milliken & Company | Made in the USA

Cover image: *Abstract interior of concrete*,
by sergeymansurov. © 2017 Shutterstock

2710027554
CP 0317