



**MAJOR  
FREQUENCY:  
TWO**

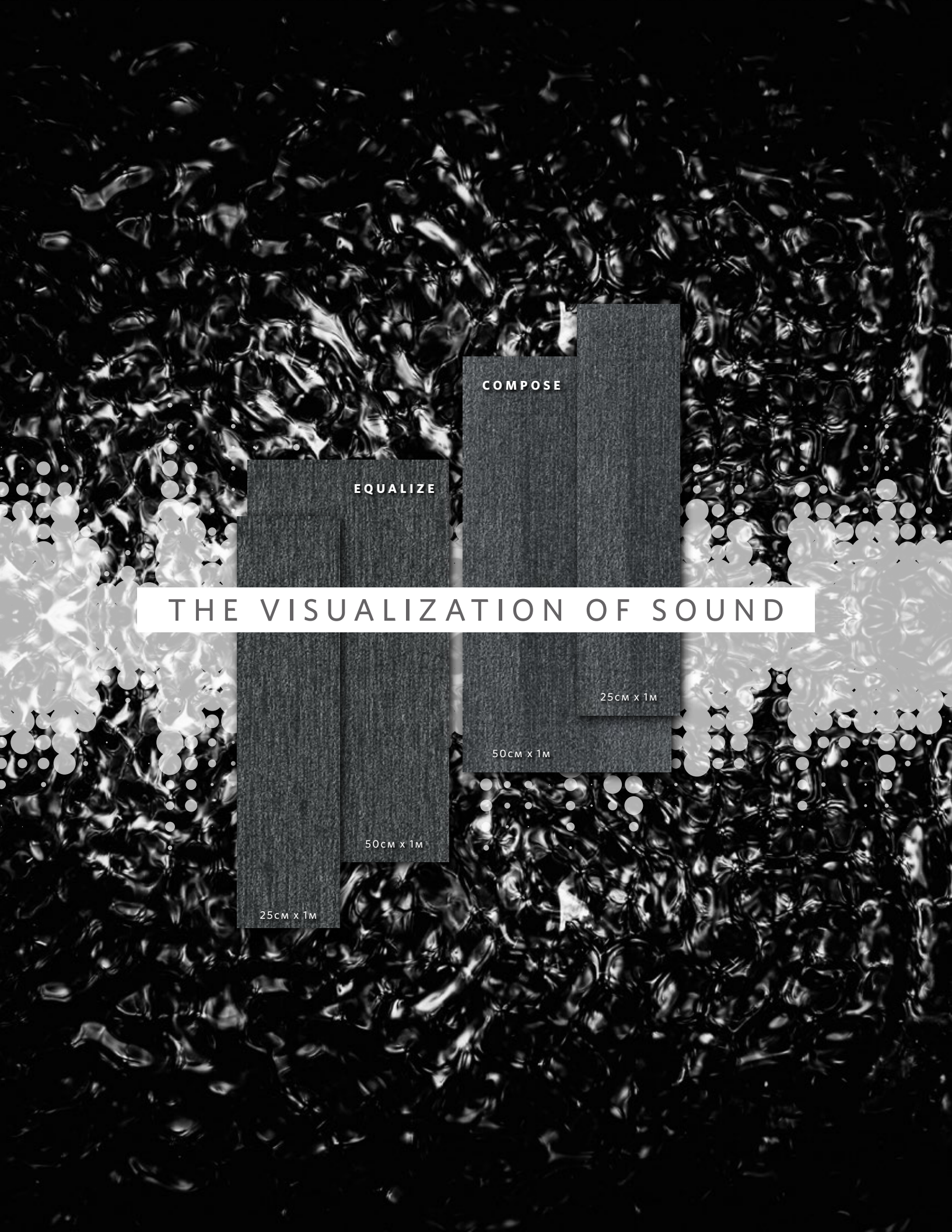
Equalize

Compose



PRICE

*Milliken*<sup>TM</sup>



# THE VISUALIZATION OF SOUND

EQUALIZE

COMPOSE

25cm x 1m

50cm x 1m

50cm x 1m

25cm x 1m



Equalize in Outro EQL27. Compose in Outro CMP27. 25cm x 1m planks.

Sound can beckon to the core of our emotions. What begins as a singular wave can multiply and curiously sync together, eventually inciting a poignant experience within each of us.

Introducing Major Frequency: Two, the second wave in a series of inspiration rooted in the realization of sound's power. Through two symbiotic patterns available in 12 enriched colors, this collection explores the dynamic relationship between monochrome and color, while also discovering the visual effects of applied gradations. Offered in two sizes, 25cm x 1m and 50cm x 1m, discover the depths of your originality with Major Frequency: Two.

## MAJOR FREQUENCY: TWO

## EQUALIZE

Adjust the balance between frequencies with Equalize, subtle bands of detail will boost your design to new levels.



4 Equalize in Outro EQL27, 25cm x 1m planks. Vertical Ashlar.

## COMPOSE

Create a unique composition on the floor. Find the perfect balance with the subtle variances found in Compose.



5 Compose in Outro CMP27, 25cm x 1m planks. Vertical ashlar.



(Front to back) Equalize in Whole Note EQL94. Compose in Whole Note CMP94. Equalize in Half Step EQL96. Compose in Half Step CMP96. Equalize in Tonality EQL153. Compose in Tonality CMP153. Equalize in Intro EQL209. Compose in Intro CMP209. 25cm x 1m planks and 50cm x 1m planks. Vertical ashlar.







(Left to right) Equalizer in Intro EQL209. Equalizer in Interval EQL250. Equalizer in Tonality EQL153. Equalizer in Outro EQL27. Equalizer in Half Step EQL96. 25cm x 1m planks. Vertical ashlar.



## A BACKSTAGE VIEW

From its initial concept to its final creation, Major Frequency: One & Two were designed to be each other's ideal complement. With a large selection of both patterns and colors, creating a cohesive album of unique floorscapes has never been simpler.



MAJOR FREQUENCY: ONE

MAJOR FREQUENCY: TWO



(Left to right) Major Frequency: Two, Equalize in Outro EQL27, Major Frequency: One, Distortion in Buzz DTN94-27-217 and Distortion in Rustle DTN141-79-209, Major Frequency: Two, Equalize in Intro EQL209 and Equalize in Outro EQL27. 25cm x 1m planks. Vertical ashlar.



16 Compose in Outro CMP27. 25cm x 1m planks. Vertical ashlar.



17 Compose in Verse CMP141. 25 cm x 1m planks. Herringbone.



## IMPROV SESSION

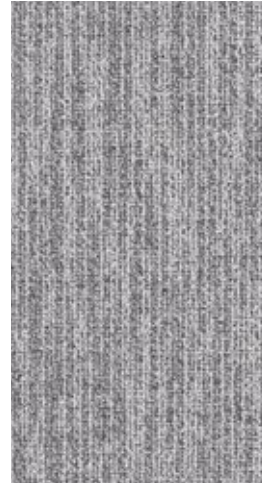
Set your own groove. Compose your own song. Arrange your own harmony. With two different tile sizes that easily blend between patterns, your original floorscape is just waiting to be written.

Visualize now at [MillikenFloors.com](https://www.MillikenFloors.com)

COLOR LINE IN EQUALIZE



EQL209  
INTRO



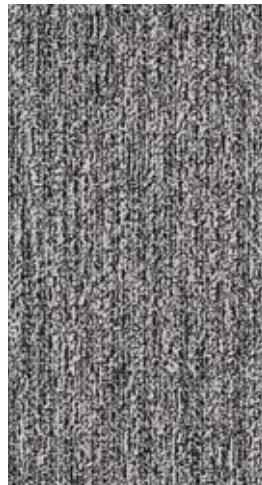
EQL152  
CHORD



EQL122  
ENSEMBLE



EQL141  
VERSE



EQL250  
INTERVAL



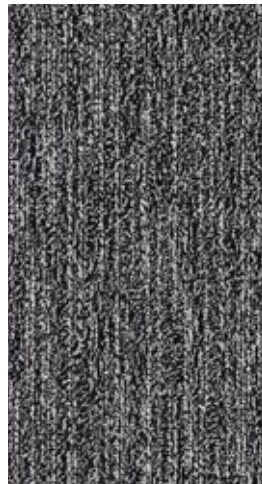
EQL13  
RHYTHM



EQL94  
WHOLE NOTE



EQL73  
GENRE



EQL153  
TONALITY



EQL27  
OUTRO



EQL96  
HALF STEP

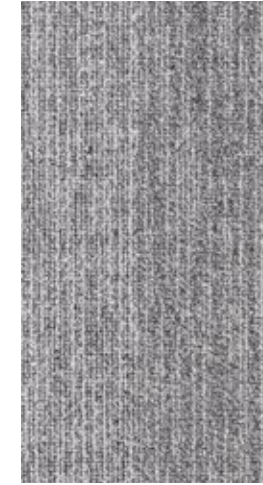


EQL119  
SCALE

COLOR LINE IN COMPOSE



CMP209  
INTRO



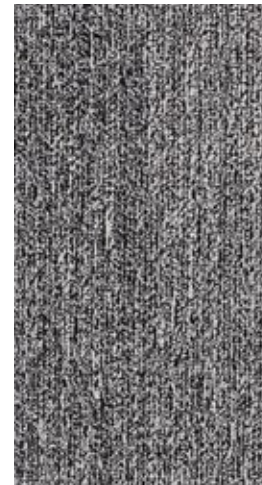
CMP152  
CHORD



CMP122  
ENSEMBLE



CMP141  
VERSE



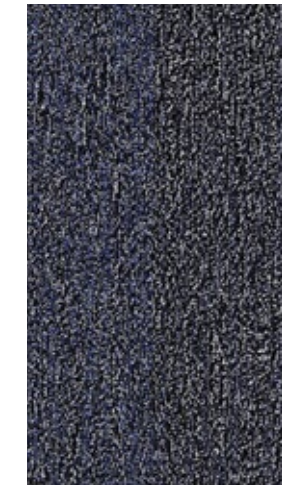
CMP250  
INTERVAL



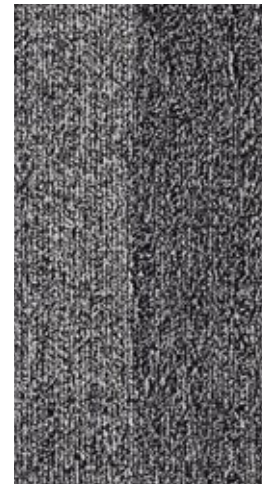
CMP13  
RHYTHM



CMP94  
WHOLE NOTE



CMP73  
GENRE



CMP153  
TONALITY



CMP27  
OUTRO



CMP96  
HALF STEP



CMP119  
SCALE

# STYLE BACKED BY PERFORMANCE

Milliken Floor Covering offers products and expertise in all areas of your commercial spaces, including high-performance entryway systems, modular and broadloom carpet, luxury vinyl tile and milliCare®. Simplify your flooring projects by working with a trusted partner that lets you focus on enjoying the process of creating a great space.

Milliken

(Left to right) Equalizer in Intro EQL209. Equalizer in Interval EQL250. Equalizer in Tonality EQL153. Equalizer in Outro EQL27. Equalizer in Half Step EQL96.

## Complete Performance and Support

### ENTRYWAY SYSTEMS

Great architecture and design aren't just about managing all that goes into an effective, attractive space. It's also about what's intentionally kept out. That's why the protective flooring experts at Milliken created OBEX™, a comprehensive entrance system with a range of proven forms and materials. OBEX equips architects, engineers and specifiers with all they need to create site-specific, high-performing entries, without compromising their project's overall design.

### MODULAR CARPET AND BROADLOOM

Milliken's broadloom and carpet tile incorporate the latest innovations in tufting and dyeing technology, achieving unique looks and excellent performance. All carpet tile products have cushion backing for an extended lifespan, as well as ergonomic and environmental benefits.

### LUXURY VINYL TILE

From natural looks of wood and stone to more modern textures and abstracts, Milliken's collection of Luxury Vinyl Tile flooring creates new options for a commercial or hospitality interior. Our simple-to-search Color Reference system provides easy coordination of the LVT options to modular and broadloom carpets.

### MILLICARE®

milliCare takes caring for your flooring and textiles off your to-do list, which means you can skip right to the part where you get to lean back, put your hands behind your head, and be a hero for keeping a beautifully cleaned space.



### WARRANTY

Our products are backed by lifetime commercial warranties that ensure quality and give peace of mind. Milliken stands behind its products in the areas of Face Fiber Wear, Staining/Soiling Resistance, Color Pattern Permanency, Delamination of Backing, Edge Ravel, Tuft Bind, Floor Compatibility, Antistatic, Flammability, Cushion Resiliency, Dimensional Stability, Floor Release, TractionBack and Moisture Resistance. » [millikenfloors.com/warranty](https://millikenfloors.com/warranty)



### SUSTAINABILITY

Core to our culture, we embrace sustainability with practices such as third party voluntary product labeling and certifications, zero waste to landfill since 1992, use of renewable energy, product life cycle assessments, ISO 9000 quality standards and all of our manufacturing sites are certified to the highest global environmental standard - ISO 14001 certified. » [millikenfloors.com/sustainability](https://millikenfloors.com/sustainability)



### STAINSMART®

StainSmart, a proprietary treatment applied to Milliken carpets designed to repel and protect against stains and enhance soil release. » [millikenfloors.com/stainSMART](https://millikenfloors.com/stainSMART)



### MOISTURE MANAGEMENT

Milliken modular carpet is a moisture mitigation solution all by itself. Unlike with hardback products, water vapor has a way to escape from beneath Milliken's cushion backing. It travels freely through our open-cell cushion, evaporating naturally through seams at the edges of each carpet tile. All modular carpet tiles come with a lifetime warranty against adhesive breakdown due to moisture vapor emissions. » [millikenfloors.com/moisture](https://millikenfloors.com/moisture)



### WELLBAC™ CUSHION

WellBAC™ cushion provides superior underfoot comfort while improving the carpet's durability and offering ergonomic, acoustic and environmental benefits. » [millikenfloors.com/cushion](https://millikenfloors.com/cushion)



### SIT TO STAND

Avoid the hassle and expense of using anti-fatigue mats under sit-to-stand workstations. Milliken cushion backed carpet tiles have ergonomics built directly into the carpet tiles themselves. » [millikenfloors.com/sit2stand](https://millikenfloors.com/sit2stand)

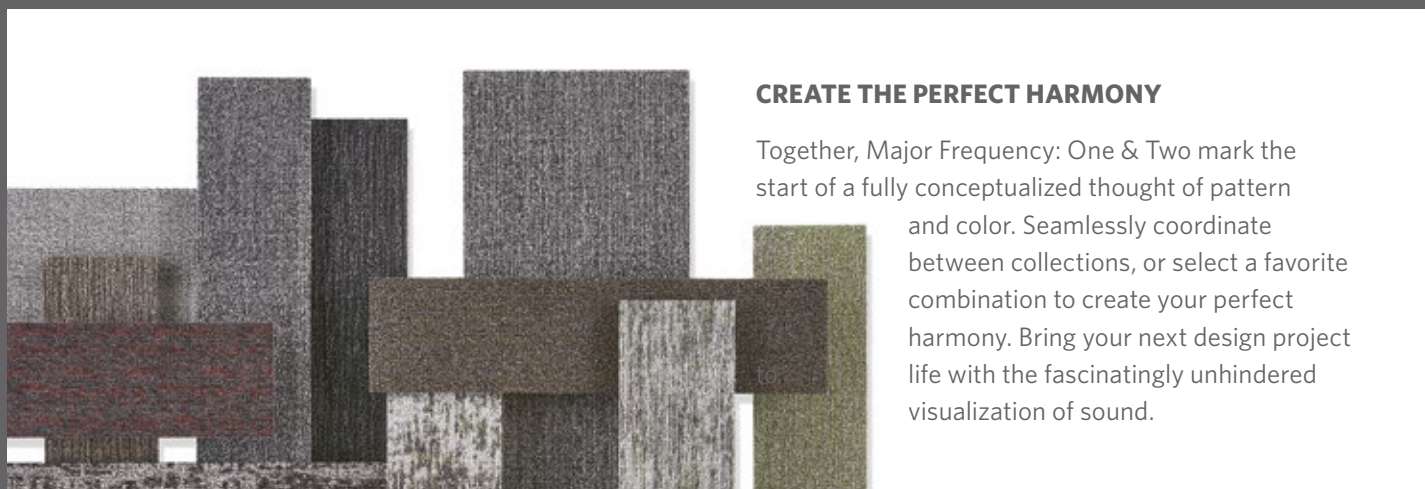


### TRACTIONBACK®

Our bio-based, high-friction coating keeps carpet tiles securely in-place without additional adhesives, eliminating the need to prime or seal the floor, thereby reducing installation time and costs. » [millikenfloors.com/tractionback](https://millikenfloors.com/tractionback)

# MAJOR FREQUENCY: TWO

Equalize / Compose



## CREATE THE PERFECT HARMONY

Together, Major Frequency: One & Two mark the start of a fully conceptualized thought of pattern and color. Seamlessly coordinate between collections, or select a favorite combination to create your perfect harmony. Bring your next design project life with the fascinatingly unhindered visualization of sound.

## SUSTAINABLE FEATURES OF THIS PRODUCT

**Major Frequency: Two** is manufactured with WellBAC™ Comfort cushion backing, and is certified NSF-140 Gold with 43% pre-consumer recycled content by total product weight. **Major Frequency: Two** is also available with our NSF-140 Platinum backing option. All Milliken modular carpets carry Environmental Product Declarations and Health Product Declarations, which contribute to LEED certification. Additionally, Milliken modular carpets carry Declare® transparency labels and comply with the Red List Imperative of the Living Building Challenge™.

### Construction

Tufted, Textured Loop

### Tile Sizes

25 cm x 1 m (9.85" x 39.4")

50 cm x 1 m (19.7" x 39.4")

### Yarn Type

Universal Fibers® Solution-Dyed

Nylon Type 6,6

### Stain Repel & Resist / Soil Release

StainSmart®

### Finished Pile Height

0.10" (2.54 mm)

### Finished Pile Thickness

0.089" (2.26 mm)

### Average Density

5,258

### Standard Backing

PVC-Free WellBAC™ Cushion

Available with TractionBack®

### Texture Appearance Retention Rating (TARR)

Severe Traffic End-Use Applications

## Recommended Installation Methods



ALL PLANK METHODS

### TractionBack®

Simplify your modular installation with Milliken's patented TractionBack®, an innovative backing system that is faster, more cost efficient, and environmentally superior to wet adhesives and peel-and-stick carpet tile.



Declare.



## Growing greener for over 100 years.

This product has a UL® Environment 3<sup>rd</sup> party verified Environmental Product Declaration (EPD). A copy of the EPD is available online at [millikencarpet.com/epd](http://millikencarpet.com/epd) and [productguide.ulenvironment.com](http://productguide.ulenvironment.com).

This WellBAC™ cushion carpet tile product is covered by one or more patents, published applications and/or patents pending. Specifications are subject to normal manufacturing tolerances and may be changed without prior notice. Images in this brochure are approximate for color and pattern scale. Please use actual carpet samples to make your final selections.