



COASTLINE

Milliken™



WHERE LAND AND SEA FLOW TOGETHER.

The Coastline collection was inspired by natural transitions of land and water - ocean waves, sandy beaches, grassy marshes and rocky cliffs. Whether you want a relaxed atmosphere or vibrant energy, these subtle gradients will allow you to create spaces that organically connect and flow.



COLOR



LEFT TRANSITION



NEUTRAL



RIGHT TRANSITION

COAST-TO-COAST GOES WALL-TO-WALL.

The modular system makes it easy to define spaces and incorporate wayfinding. Two distinct patterns, six neutrals and twelve colors offer ample diversity. Explore a variety of natural gradients as well as random layouts to achieve your design vision.





WE HONOR THE COASTLINE BY PROTECTING IT.

The Coastline collection is printed on ECONYL® yarn, which is made from reclaimed fishing nets, carpets, and nylon waste otherwise destined for our landfills and oceans. This recycled nylon has the same characteristics as nylon made from virgin raw material. Creating beautiful carpet using innovative science is at the core of our **M/PACT™ carbon neutral program**. Coastline is further proof that you don't have to sacrifice aesthetics to be a responsible global citizen.



SEAMLESSLY TRANSITION FROM BEACH TO BOARDWALK.

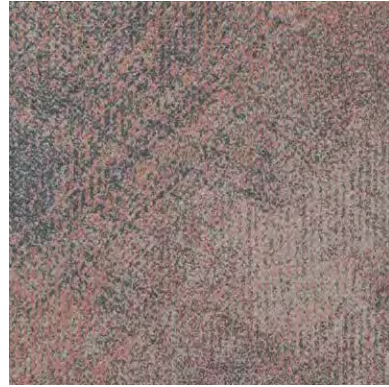
Milliken offers multiple collections of resilient flooring that complement Coastline. Choose the look of natural wood and stone or something entirely unexpected. We've made it easy to pair flooring tiles to enhance the form and function of any space.



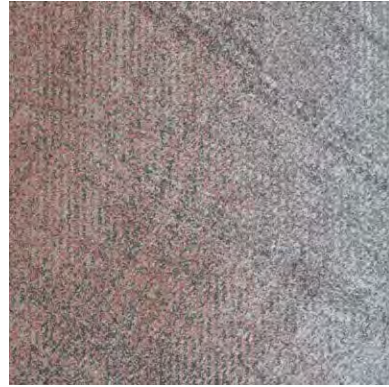
AS COMFORTABLE AS WALKING BAREFOOT IN THE SAND.

Improve wellness in the workplace with WellBAC® cushion backing. It can reduce muscle strain by as much as 24% compared to hardback tiles, making a noticeable improvement to comfort in sit-to-stand environments. It absorbs 50% more noise than hardback which can reduce stress and improve concentration. Our cushion backing was even designed to be permeable, allowing water vapor to pass through and evaporate, eliminating the risk of moisture problems. Put simply, Coastline is the perfect combination of science and aesthetics.

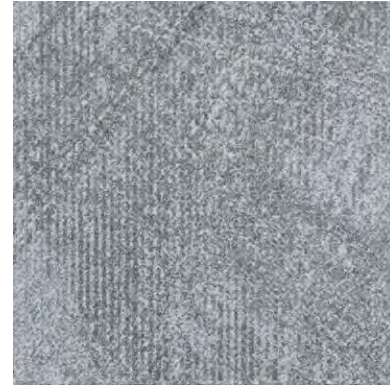
COASTLINE IN LANDSCAPE



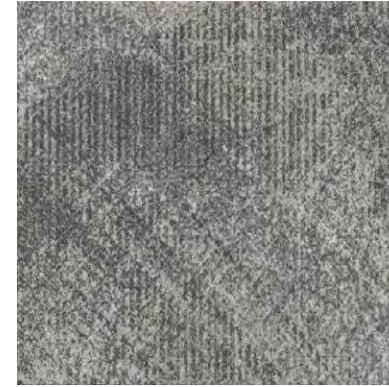
SCALLOP
LND153-261



SCALLOP/LIGHTHOUSE
LNT153-261/215-153
LNT215-153/153-261



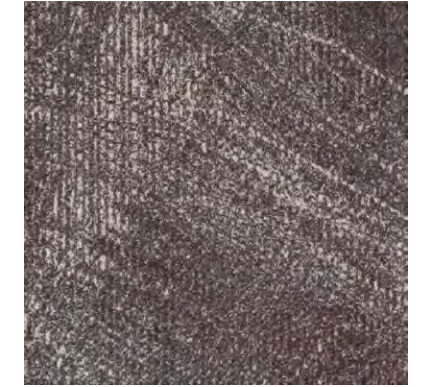
LIGHTHOUSE
LND215-153



PAMPAS GRASS
LND153-144



PAMPAS GRASS/MUSSEL
LNT153-144/209-263
LNT209-263/153-144



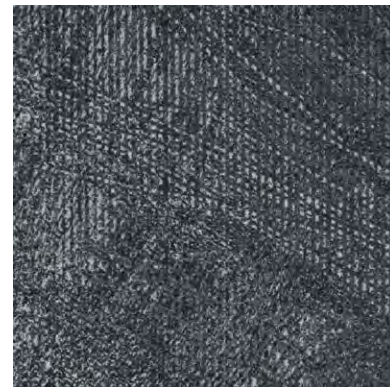
MUSSEL
LND209-263



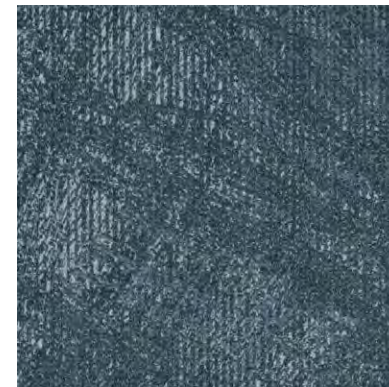
LIGHTHOUSE
LND215-153



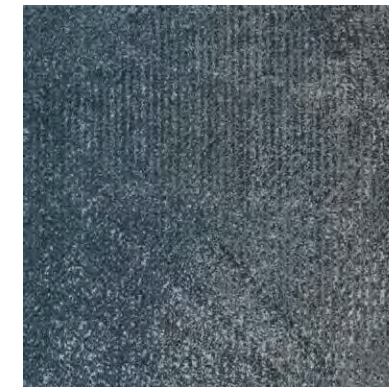
LIGHTHOUSE/SEABED
LNT215-153/215-119
LNT215-119/215-153



SEABED
LND215-119



ATLANTIC
LND118-73



ATLANTIC/ROCKPOOL
LNT118-73/153
LNT153/118-73



ROCKPOOL
LND153



CRUSH
LND5-15



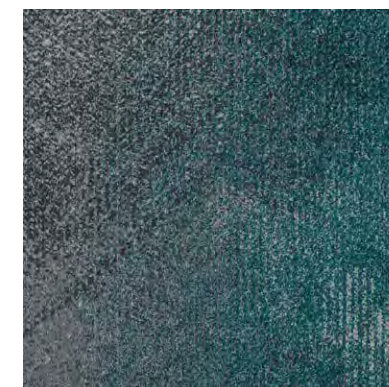
CRUSH/PAMPAS GRASS
LNT5-15/153-144
LNT153-144/5-15



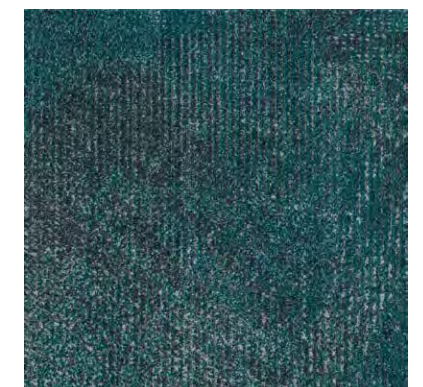
PAMPAS GRASS
LND153-144



ROCKPOOL
LND153



ROCKPOOL/MARITIME
LNT153/118-125
LNT118-125/153



MARITIME
LND118-125

COASTLINE IN LANDSCAPE

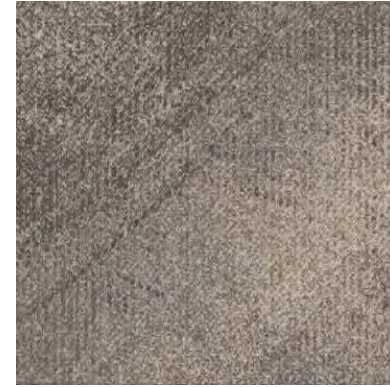
COASTLINE IN LANDSCAPE



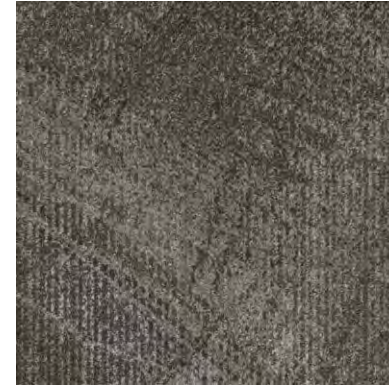
SHORE
LND96-65



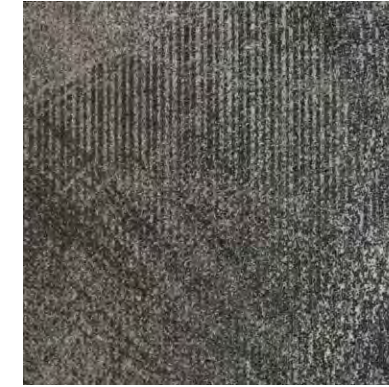
SHORE/SANDBAR
LNT96-65/254-15
LNT254-15/96-65



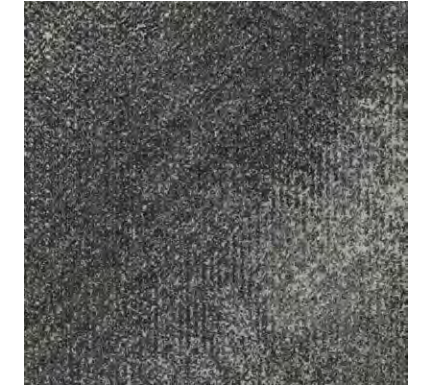
SANDBAR
LND254-15



DUNE
LND59-124



DUNE/ShORELINE
LNT59-124/79-120
LNT79-120/59-124



ShORELINE
LND79-120



SANDBAR
LND254-15



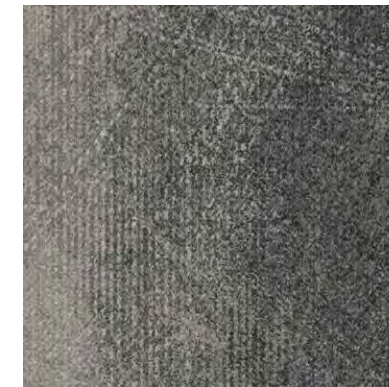
SANDBAR/SEA OAT
LNT254-15/59
LNT59/254-15



SEA OAT
LND59



SANDPIPER
LND250



SANDPIPER/GREY SEAL
LNT250/133-13
LNT133-13/250



GREY SEAL
LND133-13



PELICAN
LND180



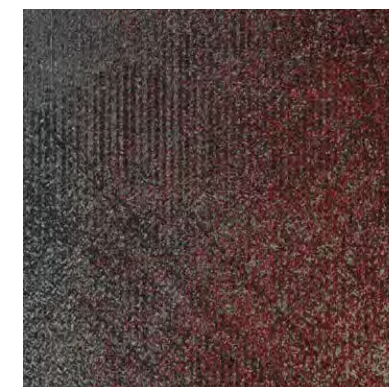
PELICAN/DUNE
LNT180/59-124
LNT59-124/180



DUNE
LND59-124



GREY SEAL
LND133-13



GREY SEAL/ANEMONE
LNT133-13/60
LNT60/133-13



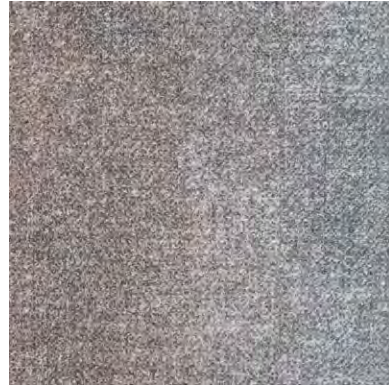
ANEMONE
LND60

COASTLINE IN LANDSCAPE

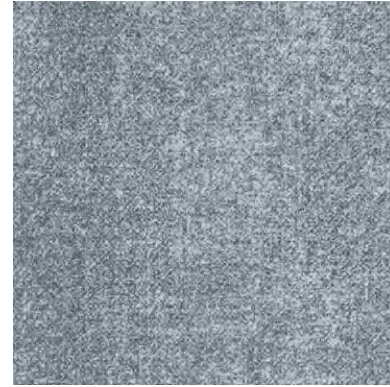
COASTLINE IN SEASCAPE



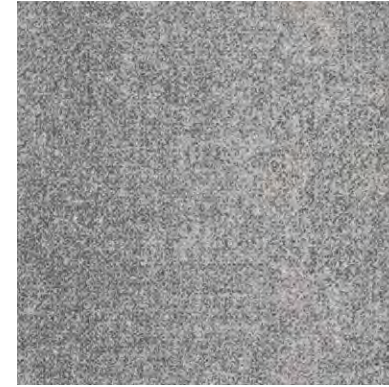
SCALLOP
SEA153-261



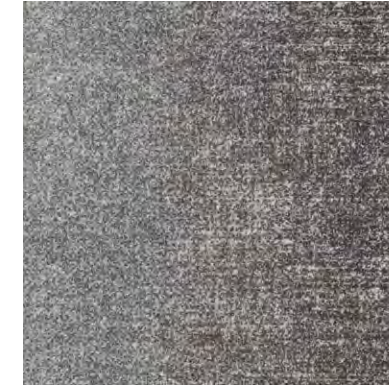
SCALLOP/LIGHTHOUSE
SET153-261/215-153
SET215-153/153-261



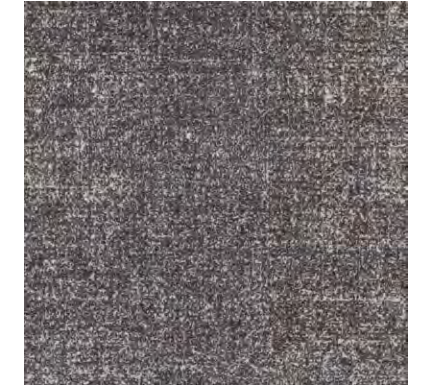
LIGHTHOUSE
SEA215-153



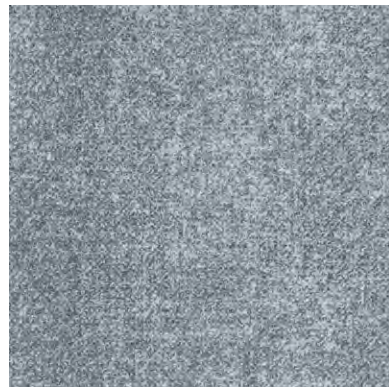
PAMPAS GRASS
SEA153-144



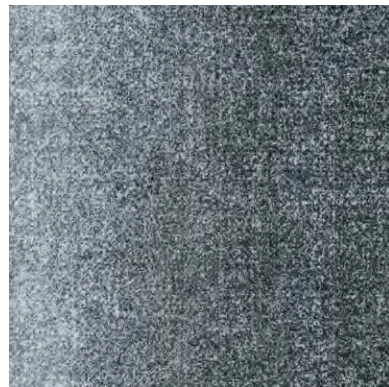
PAMPAS GRASS/MUSSEL
SET153-144/209-263
SET209-263/153-144



MUSSEL
SEA209-263



LIGHTHOUSE
SEA215-153



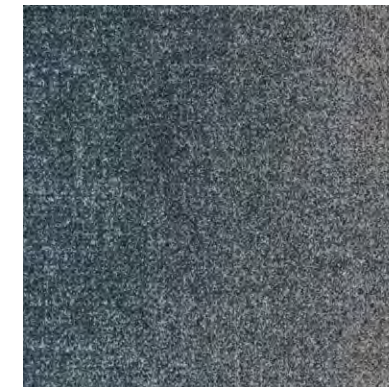
SEABED/LIGHTHOUSE
SET215-153/215-119
SET215-119/215-153



SEABED
SEA215-119



ATLANTIC
SEA118-73



ATLANTIC/ROCKPOOL
SET118-73/153
SET153/118-73



ROCKPOOL
SEA153



CRUSH
SEA5-15



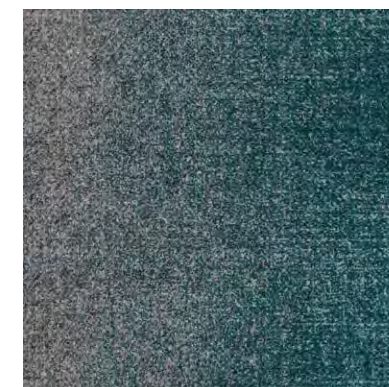
CRUSH/PAMPAS GRASS
SET5-15/153-144
SET153-144/5-15



PAMPAS GRASS
SEA153-144



ROCKPOOL
SEA153



ROCKPOOL/MARITIME
SET153/118-125
SET118-125/153



MARITIME
SEA118-125

COASTLINE IN SEASCAPE

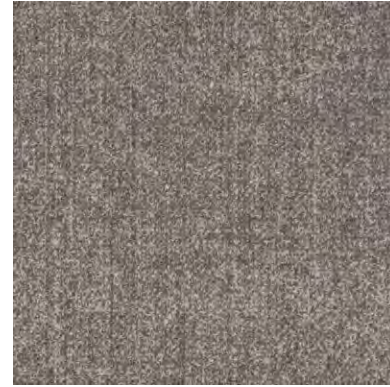
COASTLINE IN SEASCAPE



SHORE
SEA96-65



SHORE/SANDBAR
SET96-65/254-15
SET254-15/96-65



SANDBAR
SEA254-15



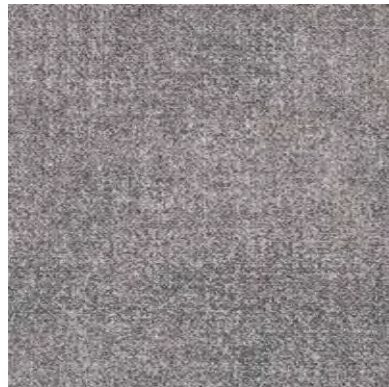
SANDBAR
SEA254-15



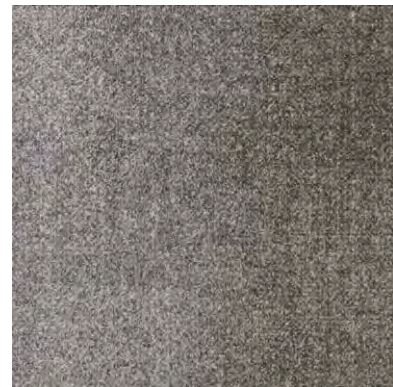
SANDBAR/SEA OAT
SET254-15/59
SET59/254-15



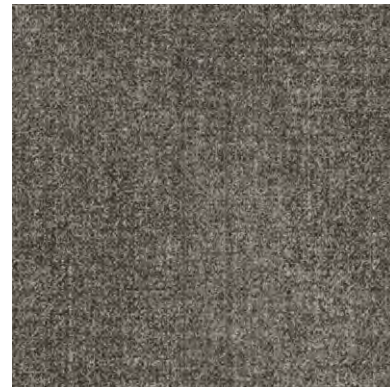
SEA OAT
SEA59



PELICAN
SEA180

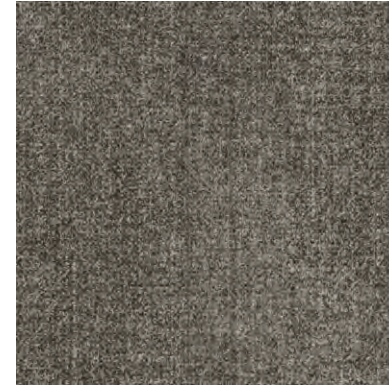


PELICAN/DUNE
SET180/59-124
SET59-124/180



DUNE
SEA59-124

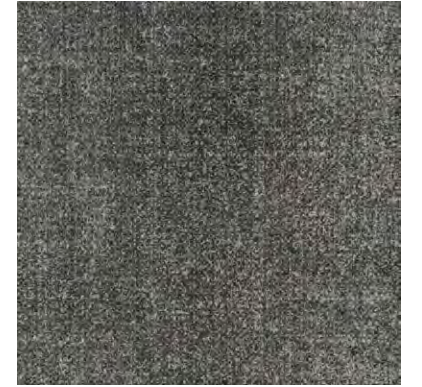
COASTLINE IN SEASCAPE



DUNE
SEA59-124



DUNE/Shoreline
SET59-124/79-120
SET79-120/59-124



Shoreline
SEA79-120



SANDPIPER
SEA250



SANDPIPER/GREY SEAL
SET250/133-13
SET133-13/250



GREY SEAL
SEA133-13



GREY SEAL
SEA133-13



GREY SEAL/ANEMONE
SET133-13/60
SET60/133-13



ANEMONE
SEA60



COASTLINE

Landscape / Seascape

Construction
Tufted, Textured Loop

Tile Size
50 cm x 50 cm
(19.7" x 19.7")

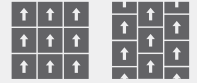
Yarn Type
ECONYL® Nylon

Stain Resist / Soil Release
StainSmart®

Standard Backing
PVC-Free WellBAC®
Comfort Cushion
Available with
TractionBack®

Texture Appearance Retention Rating (TARR)
Severe Traffic End-Use Applications

Recommended Installation Methods



MONOLITHIC ASHLAR



QUARTER-TURN



Scan to explore the collection story.

SUSTAINABLE FEATURES

Coastline is manufactured with WellBAC® Comfort cushion backing, and is certified NSF-140 Gold with 47.9% pre-consumer recycled content by total product weight. **Coastline** is also available with our NSF-140 Platinum backing option.

All Milliken modular carpets carry Environmental Product Declarations and Health Product Declarations, which contribute to LEED certification. Additionally, Milliken modular carpets carry Declare® transparency labels and comply with the Red List Imperative of the Living Building Challenge.™



M/PACT carbon neutral products offset the raw materials and manufacturing carbon footprint* by using 3rd party Verified Carbon Standard Credits that support renewable energy and carbon reduction technologies to help fight climate change. When you choose M/PACT products, you can be sure your choice is carbon neutral.

SHOWN ON THE COVER

(Front) Landscape in Shoreline LND79-120, Shoreline/Dune LNT79-120/59-124, and Dune LND59-124. Ashlar.
(Back) Seascape in Anemone SEA60. Ashlar.

Images in this brochure and architect folder are approximate for color and pattern scale. Please use actual carpet samples to make your final selections.

*As calculated and verified A1-3 GWP through an ISO14025/ISO14040 compliant LCA and published in third party EPDs.

Milliken™